



# PRICE SUPPORT PROGRAM DELIVERY

**Price Support Division  
Farm Service Agency**

Cordele, GA  
August 6, 2008



# **Food Conservation and Security Act of 2008**

**Enacted on May 22, 2008**

**PROGRAM AUTHORITY**

**CCC Federal Notice**

**issued on July 25, 2008**





# **PROGRAM AUTHORITY**

**7 CFR**

**Parts 1421, 1425**

**1405, 1216, 996 & 735**

**Handbook 8-LP**

**PS-Notices**

**LP-Notices**

**CMA-Notices**





# PROGRAM AUTHORITY

## ● FUTURE...

- Provisions not covered by existing regulations will be implemented upon publication of final regulations.



# PRICE SUPPORT PROGRAM DELIVERY

## General MAL/LDP Provisions:

- eligible producer (8-LP, par. 100)
- eligible commodity (8-LP, Part 2)
- beneficial interest (8-LP subpar. 129)


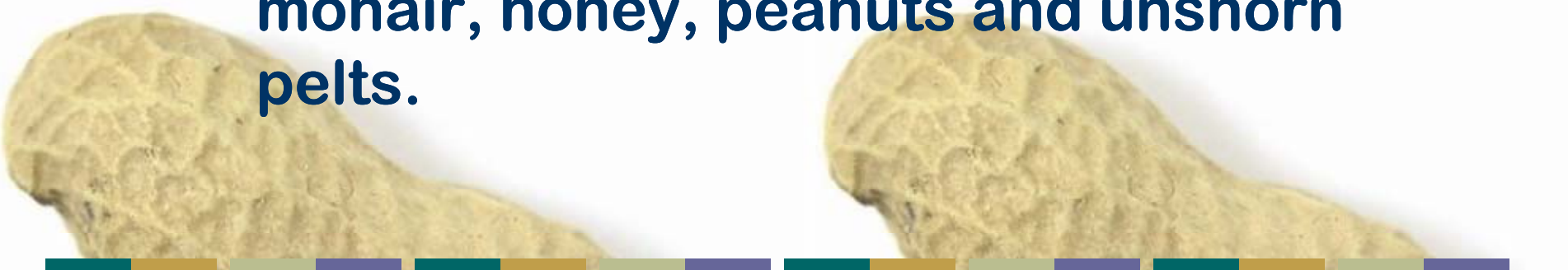
All unchanged from the 2007 CY.





# PRICE SUPPORT PROGRAM DELIVERY

*(Continued)*

- 
- **Payment Limitation Provisions – the same as the 2007 CY**
    - **Combined \$75,000 payment limitation for marketing gains and LDP's for wool, mohair, honey, peanuts and unshorn pelts.**
- 

# PRICE SUPPORT PROGRAM DELIVERY

*(Continued)*

## 2008 CY Peanut Loan Rates

Seg. 1 Peanuts		
Peanut Type	National Loan Rate Per Ton	Rate Per Percent Total Sound Mature Kernels (SMK)
Virginia	\$357.32	\$4.939
Runner	\$354.75	\$4.842
Spanish – SW	\$348.95	\$4.818
Spanish – SE	\$348.95	\$4.818
Valencia	\$357.32	\$5.219

# PRICE SUPPORT PROGRAM DELIVERY

*(Continued)*

## 2008 CY Peanut Loan Rates

### Seg. 2 and Seg. 3 Peanuts

<b>Virginia</b>	<b>\$125.06</b>	<b>No Additional Premiums and Discounts</b>
<b>Runner</b>	<b>\$124.16</b>	
<b>Spanish – SW</b>	<b>\$122.13</b>	
<b>Spanish – SE</b>	<b>\$122.13</b>	
<b>Valencia</b>	<b>\$125.06</b>	





# PRICE SUPPORT PROGRAM DELIVERY

*(Continued)*

- 
- Additional discounts for Seg. 1 warehouse-stored peanut MAL are the same as the previous crop year

- Damage
  - Foreign Material
  - Sound Splits
- 



# PRICE SUPPORT PROGRAM DELIVERY

*(Continued)*

## ■ MAL (APSS)

- Farm-Stored Certified
- Farm-Stored Measured
- Warehouse-Stored


## ● LDP (APSS or eLDP)

- Farm- or Warehouse-Stored Certified
  - Farm-Stored Measured
  - Receipted Warehouse-Stored Quantity
  - Load Summary or Scale Ticket Quantities
- 



# **PRICE SUPPORT PROGRAM DELIVERY**

## **Handling and Associated Costs**

- **The 2008 Act authorizes the Secretary to use CCC funds to pay handling and other associated costs (other than storage costs) to ensure that proper storage of 2008 through 2012 CY peanuts offered as collateral for MAL.**
- 



# PRICE SUPPORT PROGRAM DELIVERY

## Handling and Associated Costs *(Continued)*

- 
- **The handling amount will be added to the loan disbursement at loanmaking.**
  - **The rate of handling charges will include the State-specific grading and inspection fees for peanuts.**



# **PRICE SUPPORT PROGRAM DELIVERY**

## **Handling and Associated Costs** *(Continued)*

- 
- **The 2008 Act requires the repayment of handling and associated costs when MAL is redeemed.**
  - **CCC shall pay pay storage, handling, and other associated on forfeited peanuts for the 2008 through 2012 crop years.**
- 



# **PRICE SUPPORT PROGRAM DELIVERY**

## **APSS Enhancements**




### **Warehouse Stored Loanmaking**

- **calculate the dollar amount of handling charges due on quantity of peanuts offered as collateral for MAL.**
  - **print the dollar amount of handling charges paid on:**
    - **CCC-678**
    - **Warehouse Receipt Summary Report for Peanuts.**
- 



# PRICE SUPPORT PROGRAM DELIVERY

## APSS Enhancements *(Continued)*

- 
- **Warehouse Stored Loanmaking *(Con't)***
    - **provide the ability to send payment of handling charges to the warehouse for each loan disbursement.**







# **PRICE SUPPORT PROGRAM DELIVERY**

## **APSS Enhancements** *(Continued)*



### **● Settlements and Forfeitures**

- **APSS shall use the loan and warehouse rates applicable to the 2008 CY when processing settlements.**
  - **CCC shall pay storage, handling, and other associated costs on forfeited peanuts for the 2008 through 2012 CY.**
- 
- 






# PRICE SUPPORT PROGRAM DELIVERY

## APSS Enhancements *(Continued)*

### ● Warehouse-Stored MAL Repayment

- calculate the dollar amount of handling charges due on the quantity being redeemed.
  - print the dollar amount of handling charges due on CCC-500.
- 



# PRICE SUPPORT PROGRAM DELIVERY Offsets

■ **Discontinue** offset for In-handling

● **Continue** offsets for:

- **Cleaning**
  - **Drying**
  - **Custom Harvesting**
  - **Seed Account**
  - **Storage**
- 



# PRICE SUPPORT PROGRAM DELIVERY

*(Continued)*

## ■ Unchanged for 2008 CY

- deductions for unpaid storage through loan maturity
  - service fees
  - interests
  - commodity assessments
  - assignments
  - commodity certificate exchange
- 



# PRICE SUPPORT PROGRAM DELIVERY FSA-1007 Template

FSA-1007 Template

Can be obtained by visiting:



<http://www.fsa.usda.gov/dafp/psd/peanut.html>



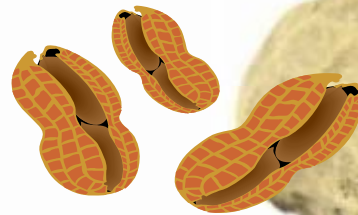


**PRICE SUPPORT PROGRAM DELIVERY**  
**FSA-1007 Requirements**



**FSA has provided the official FSA-1007  
serial numbers to AMS.**

**ONLY** the issued numbers should be used  
when printing the FSA-1007.

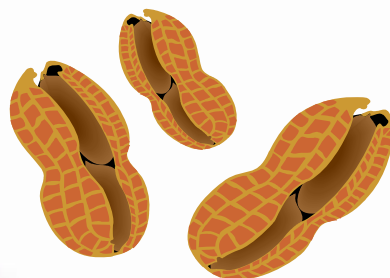




**PRICE SUPPORT PROGRAM DELIVERY**  
**FSA-1007 Requirements** *(Continued)*



The lead number for FSA-1007 numbers issued for the 2008 crop will be **"8"**.






# PRICE SUPPORT PROGRAM DELIVERY FV-95 Requirement

Lead Alphabet on the FV-95 form is  
**"S"** AMS will distribute forms, if  
applicable.





**PRICE SUPPORT PROGRAM DELIVERY**  
**DCC Transmissions & BP Profiles**



**DCC Transmission Instructions will be  
included in the Guidelines to Peanut  
Shellers**



**Peanut Market Place is Currently Under  
Construction**







# **PRICE SUPPORT PROGRAM DELIVERY**

## **Miscellaneous**

**2008 Peanut Fact Sheet**

**2008 Industry Guidelines**

**Press Release**

**LP, PS and CMA Notices**





THANK YOU!!!

